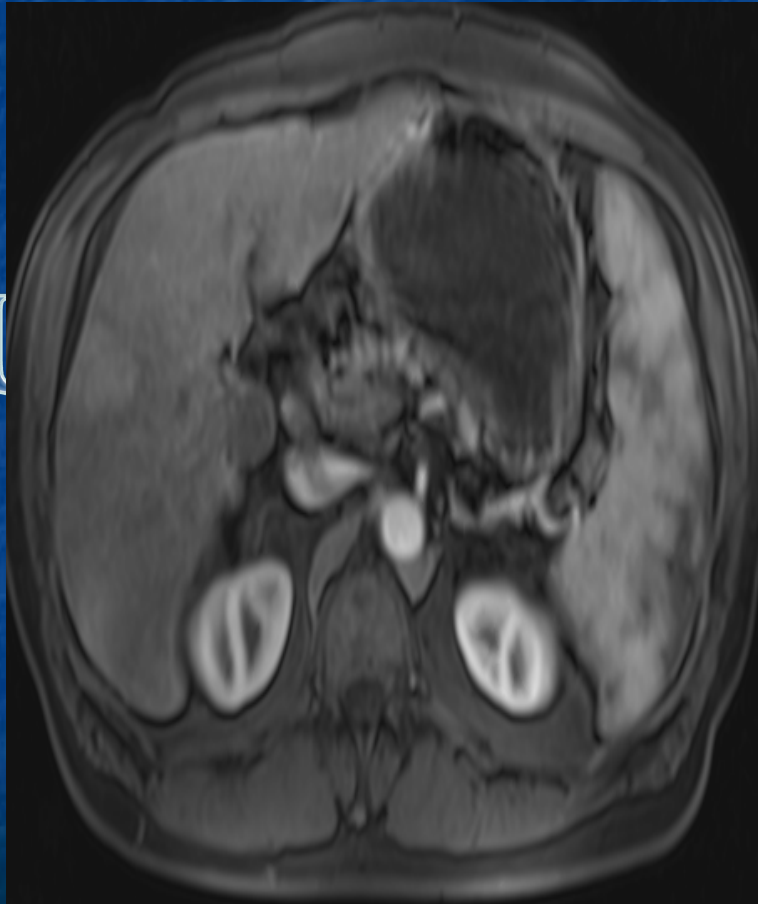
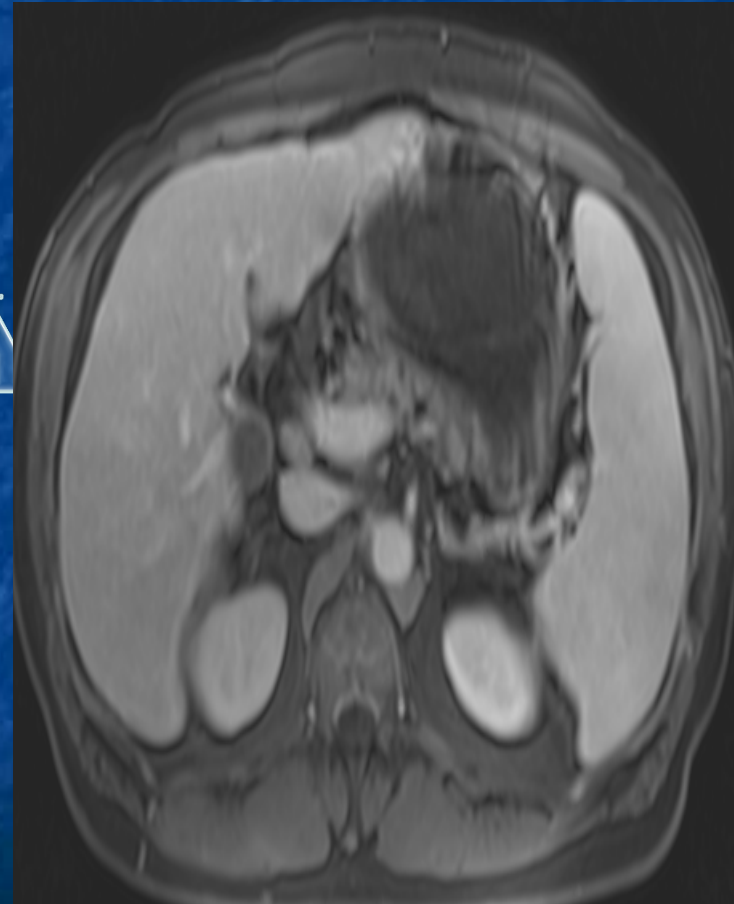


# 6 MONTH MRI

Immediate post Gad



1 minute post Gad



## CASE #2

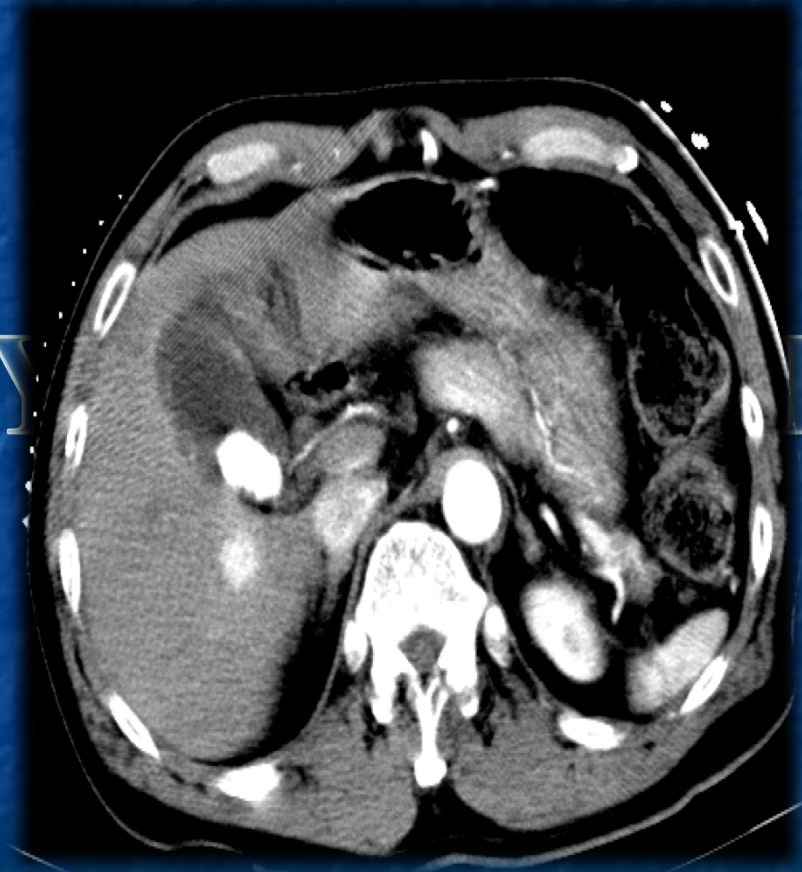
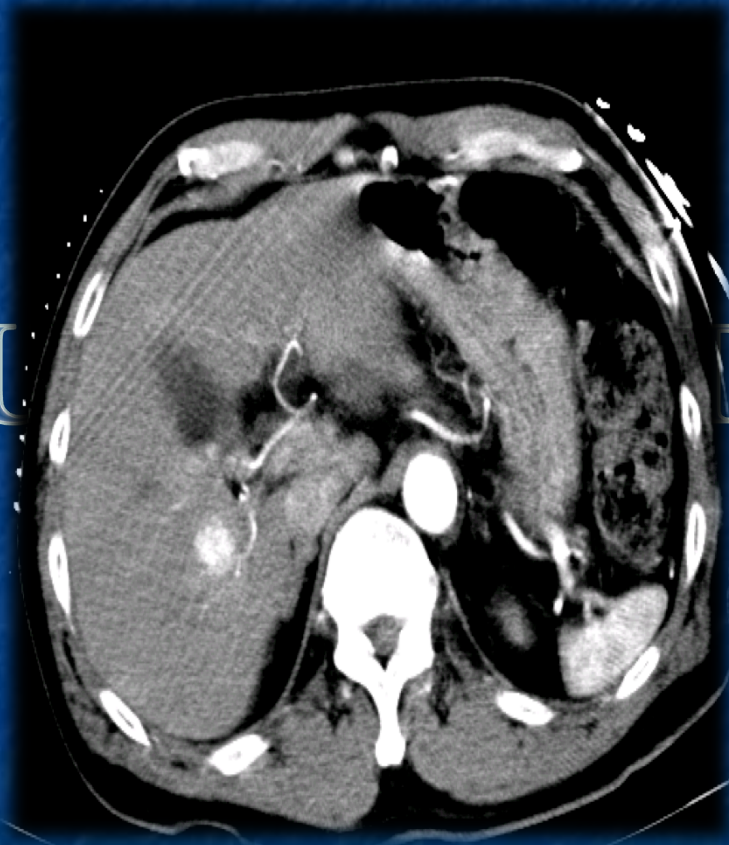
- 61 y/o male with chronic hepatitis B for 10 years and HCC

UNIVERSITY OF MIAMI

- MRI (12/09) – 2.2cm lesion located centrally in posterior aspect of right lobe.

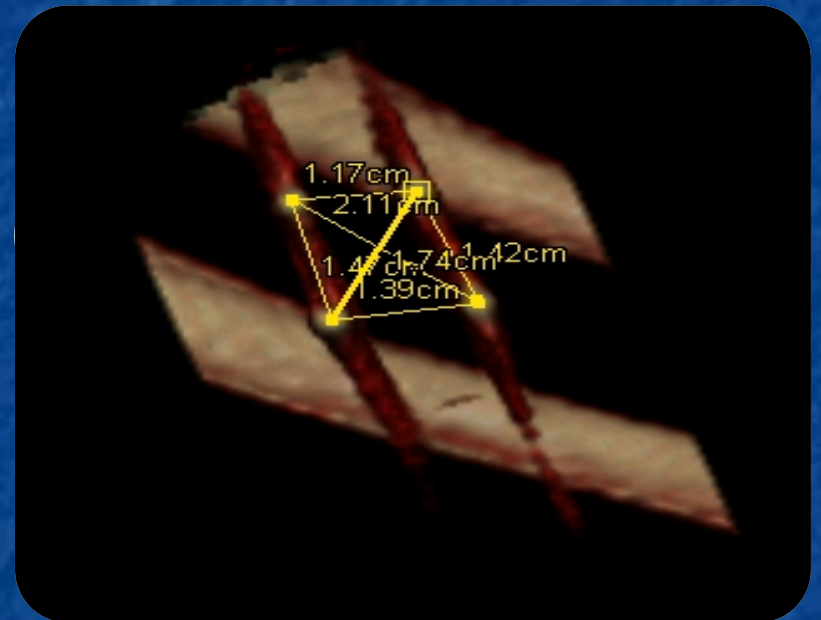
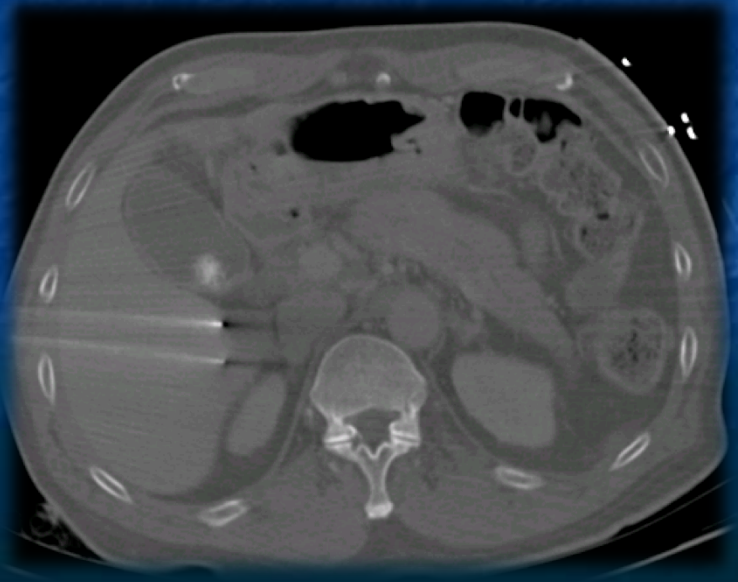
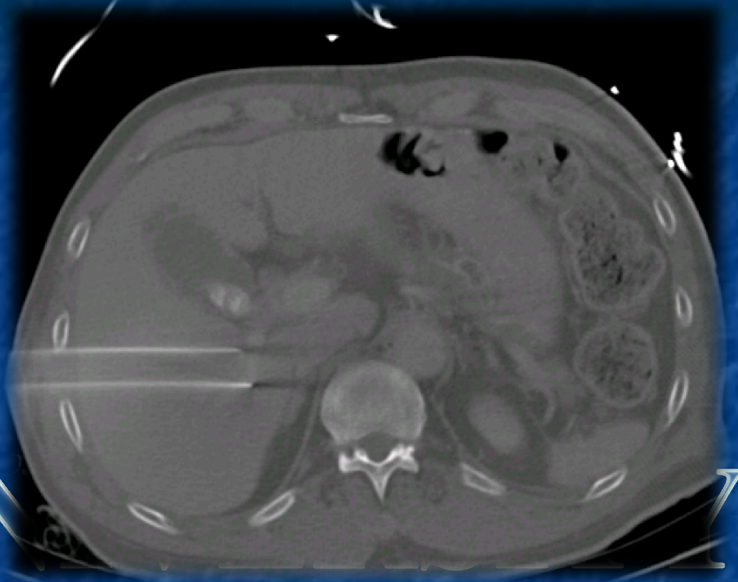


# PRE IRE IMAGING



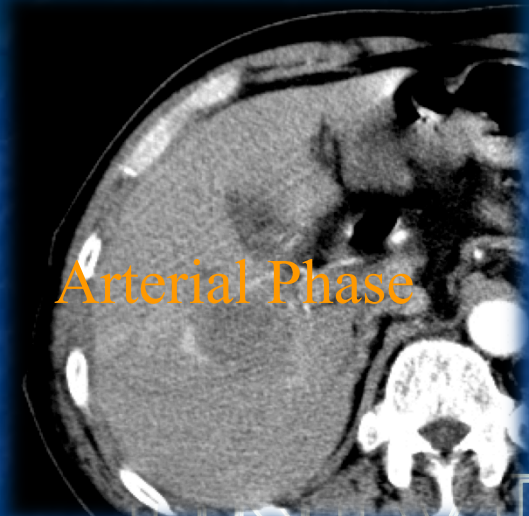
# IRE 4 PROBES

UN

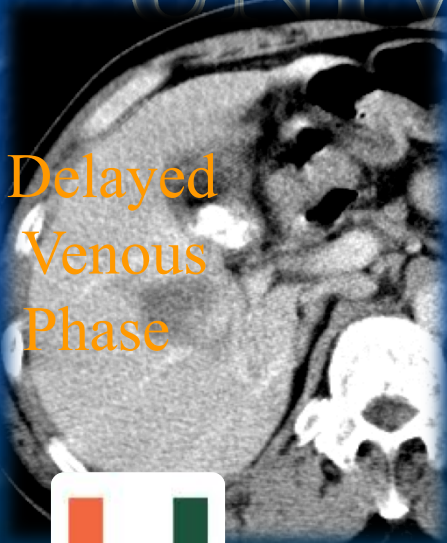


# 24 HR POST

Arterial Phase



Delayed  
Venous  
Phase

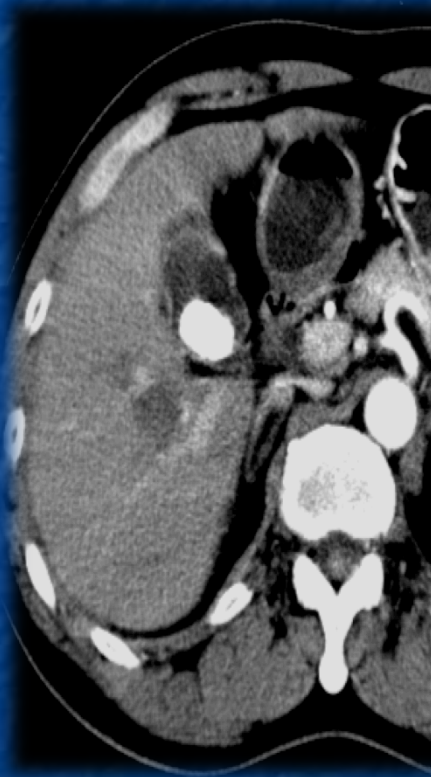


UNIVERSITY OF MIAMI



# FOLLOW UP

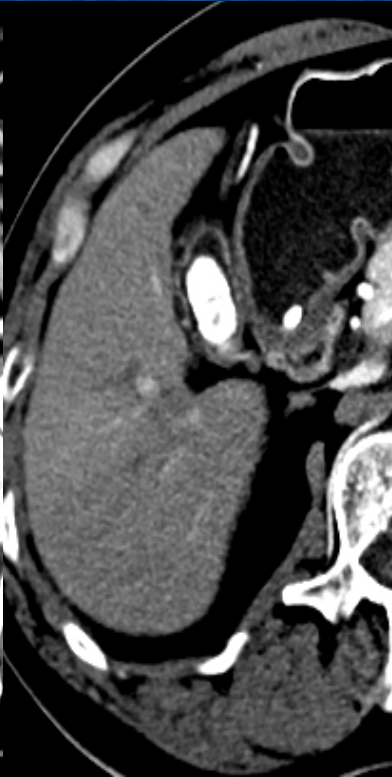
1



2



6



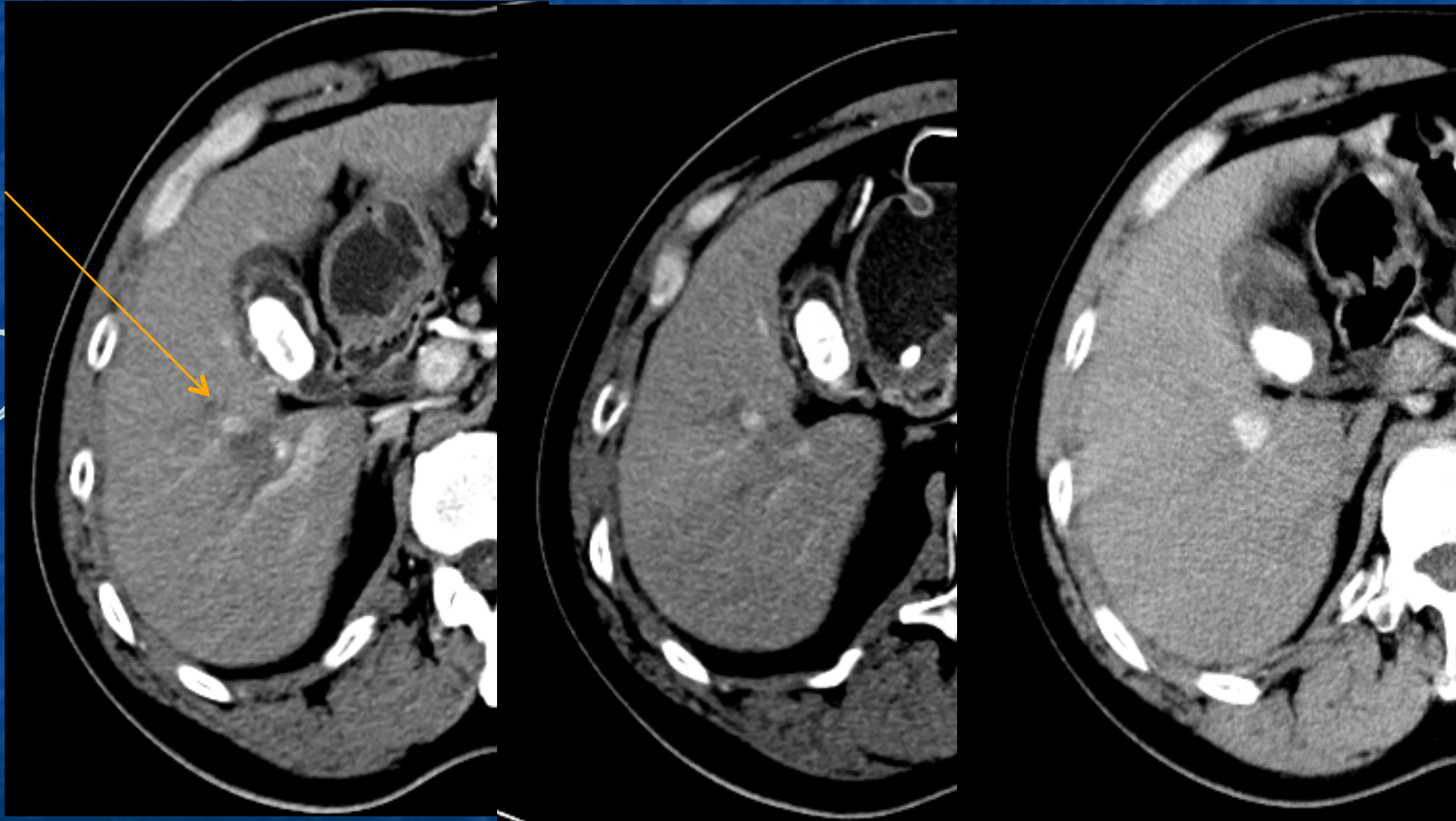
10 MONTH



2 Months

6 Months

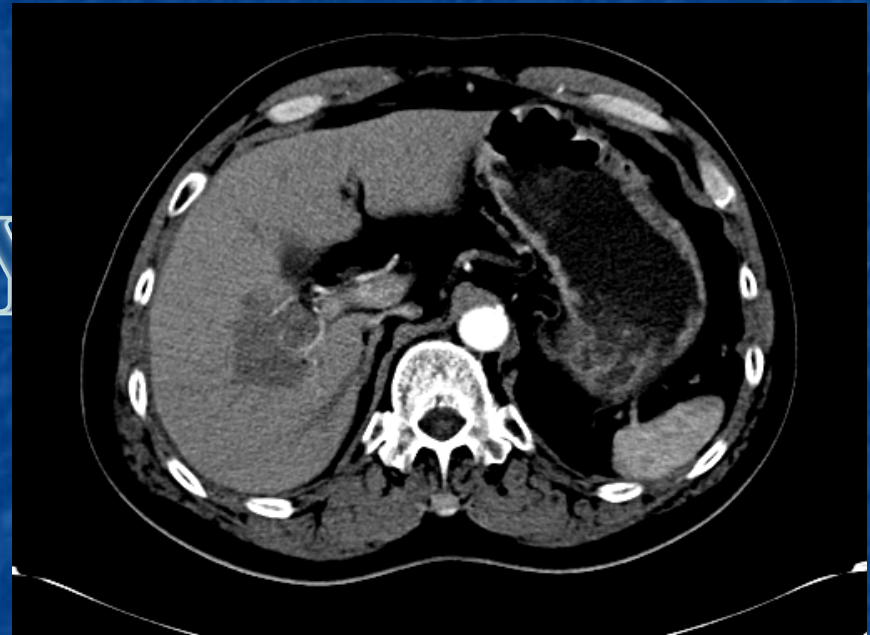
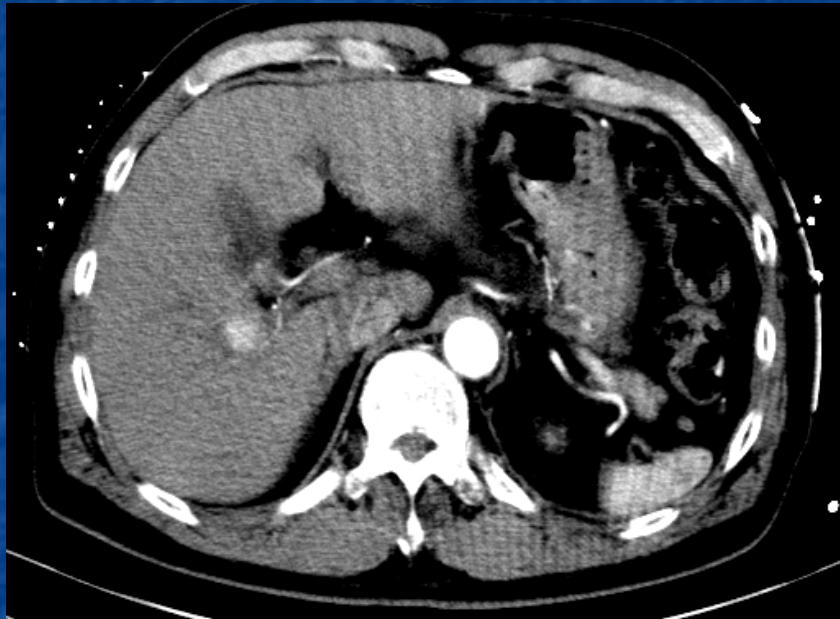
10 Months



U

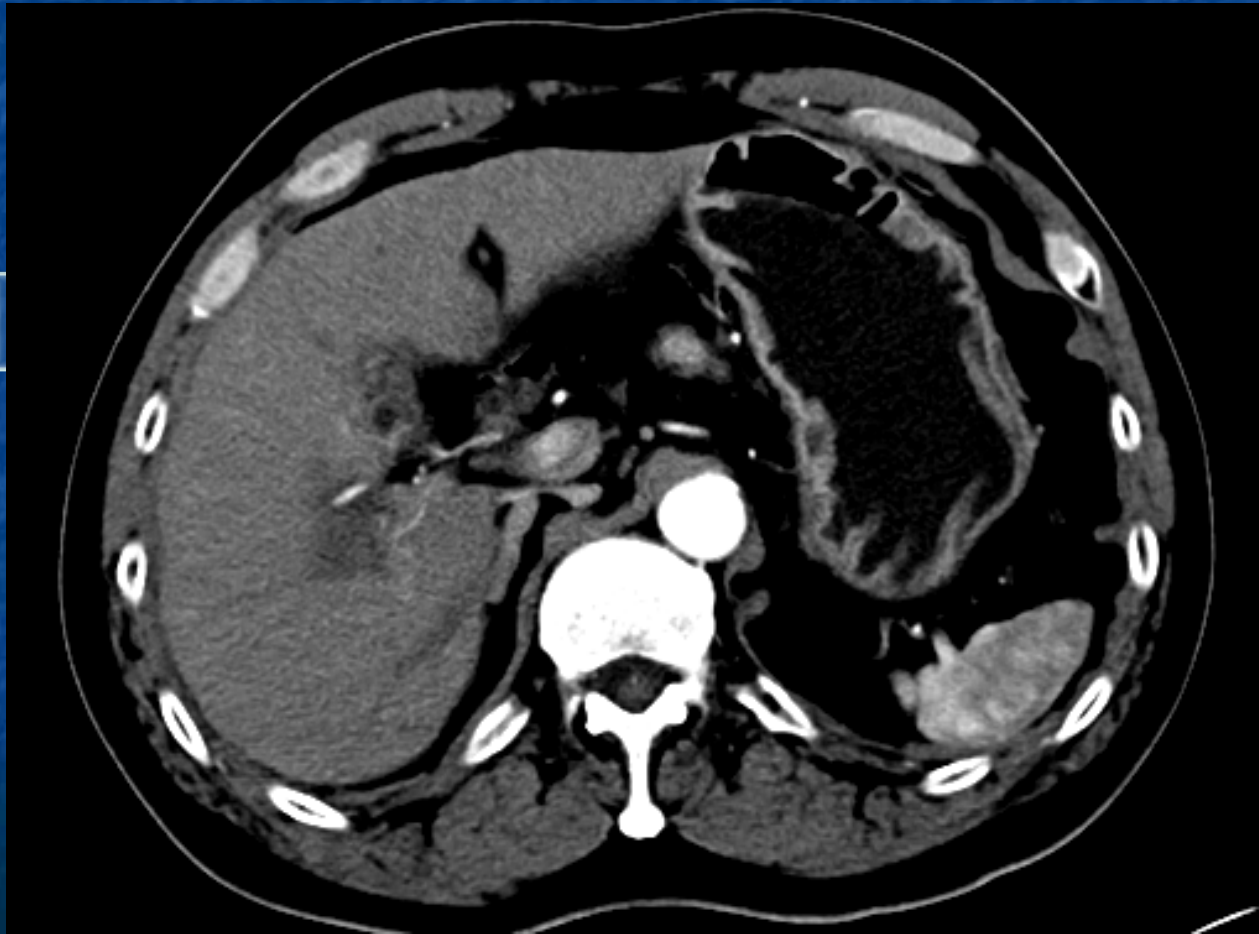


# 2<sup>ND</sup> TREATMENT





# TWO MONTH FOLLOW UP AFTER 2<sup>ND</sup> TREATMENT

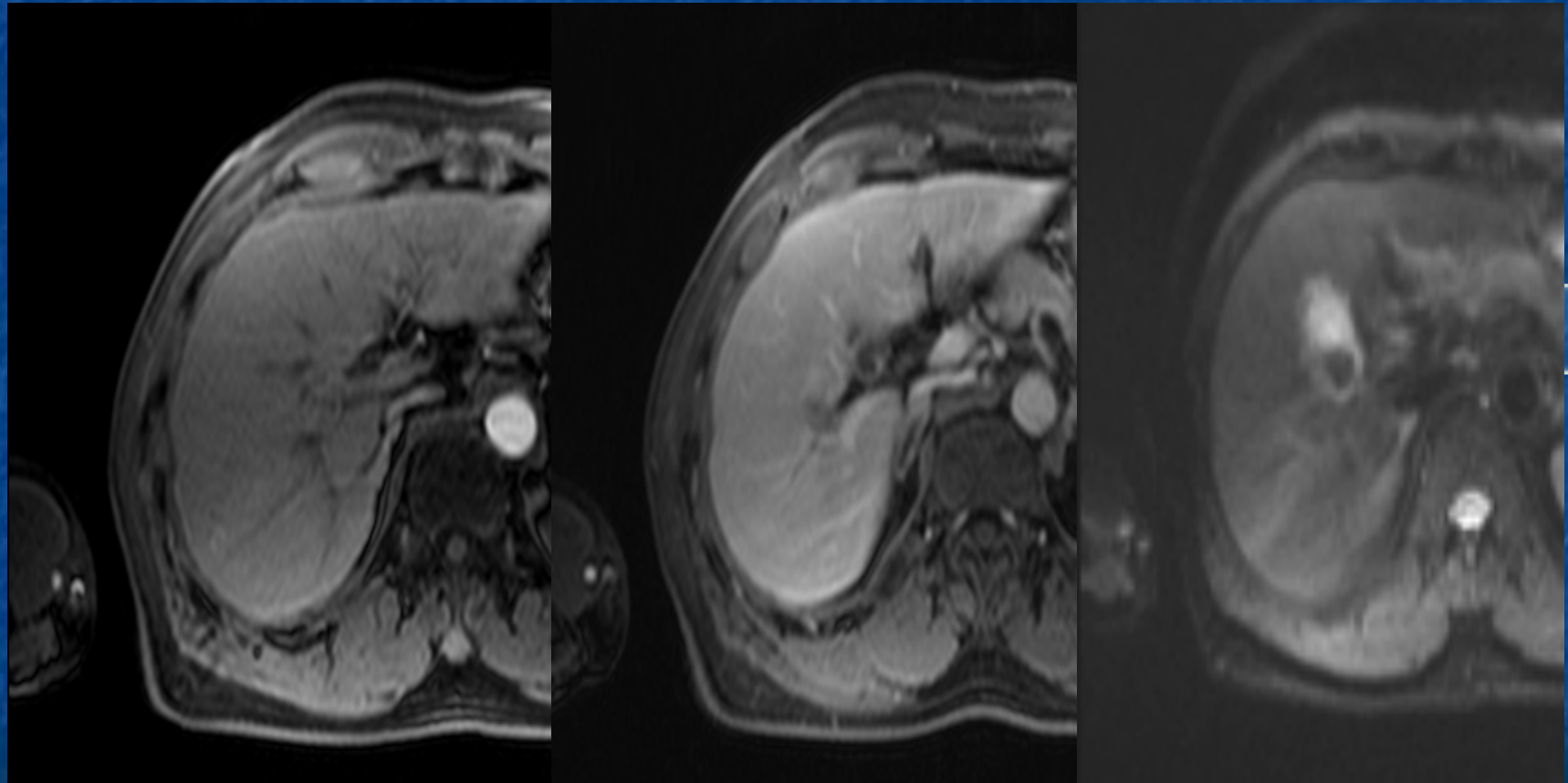


UNI

MII



# 6 MONTH FOLLOW UP (8/16/11)



POST TREATMENT HEALING

RFA vs IRE  
UNIVERSITY OF MIAMI



# RFA & IRE

10/2010

01/2012



# IRE IN METASTATIC DISEASE



UNIVERSITY OF MIAMI  
56 y/o male with metastatic colon cancer



# IRE IN METASTATIC DISEASE

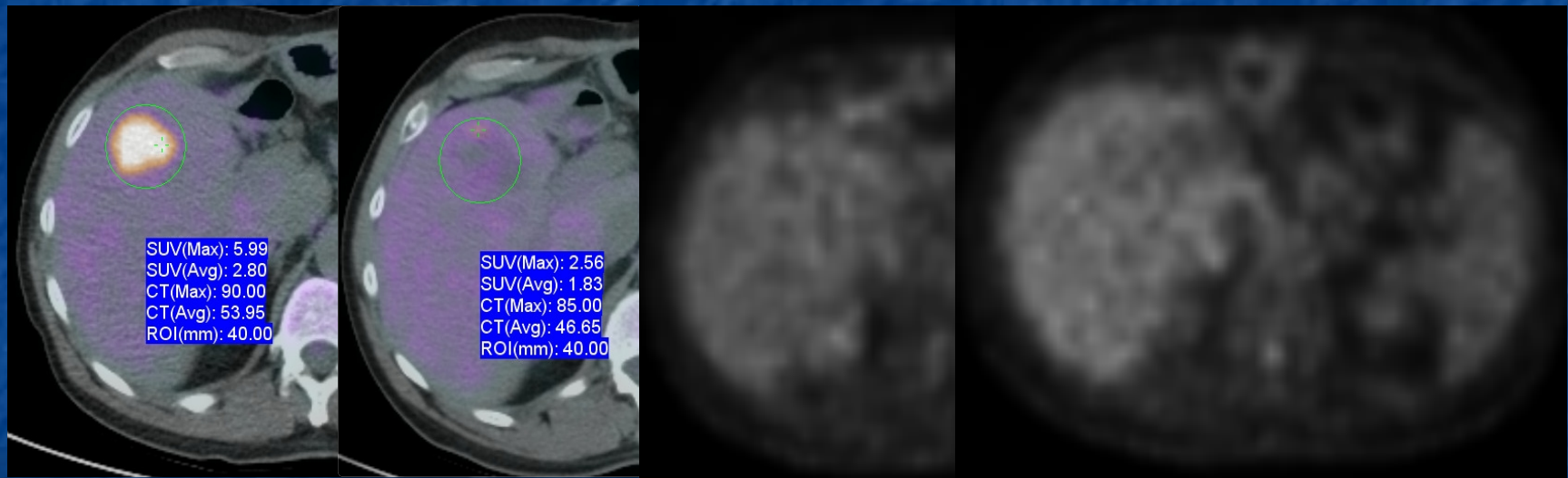
- No recurrence at 14 months follow up

Pre

6 weeks

9 months

14 months



VESSEL PATENCY POST  
IRREVERSIBLE ELECTROPORATION  
(IRE) ABLATION:  
A 15 MONTH FOLLOW UP

UNIVERSITY OF MIAMI  
SIR 2012

Narayanan, Govindarajan ; Arora, Geetika; Quintana, David;  
Mukkamalla, Umamaheshwari; Barbery, Katuska J.; Hosein,  
Peter; Yrizarry, Jose

