



# Recanalization of a Chronically Occluded SFA

Hirschel McGinnis, MD

Morton Hospital & Medical Center  
Taunton, MA

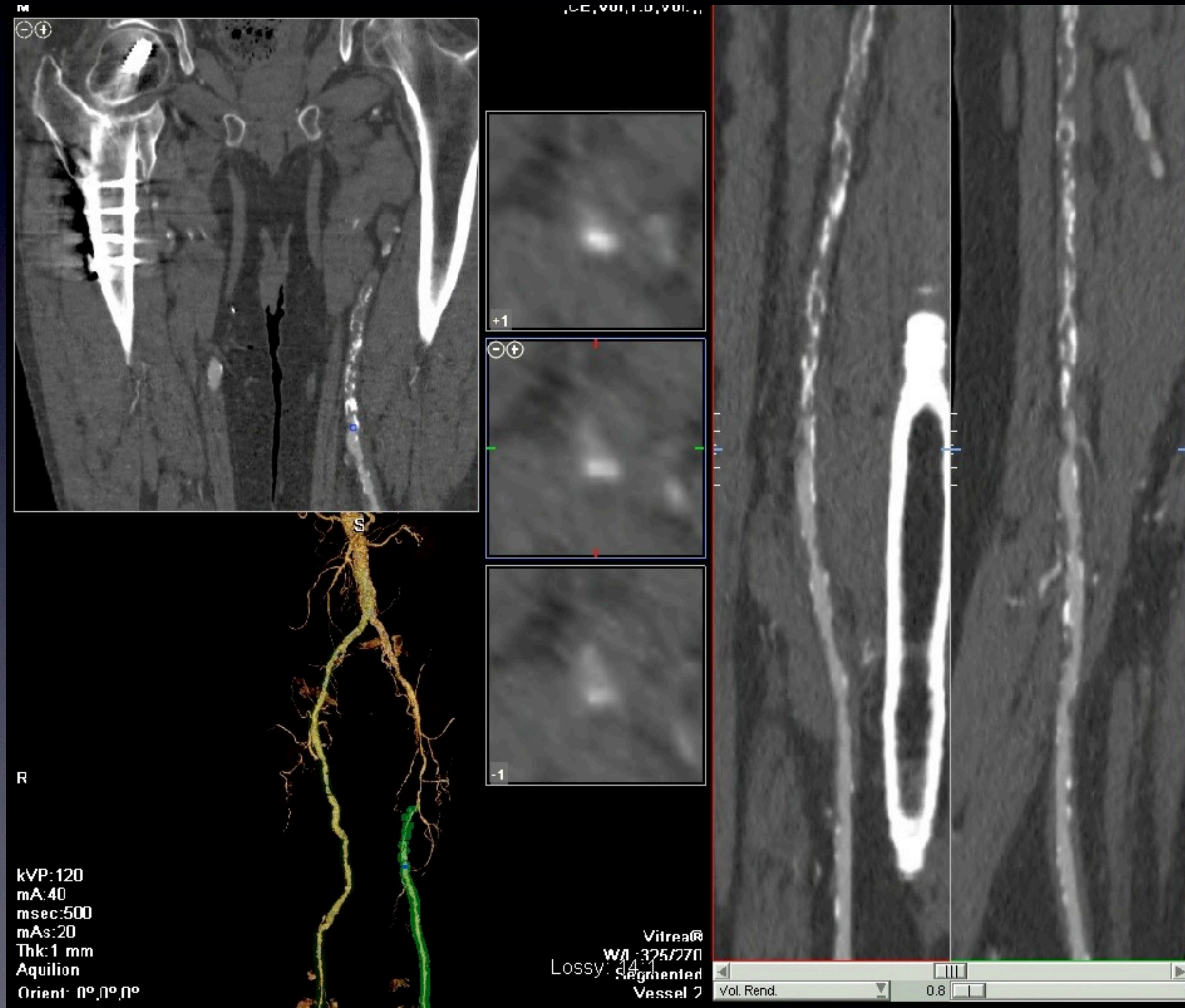
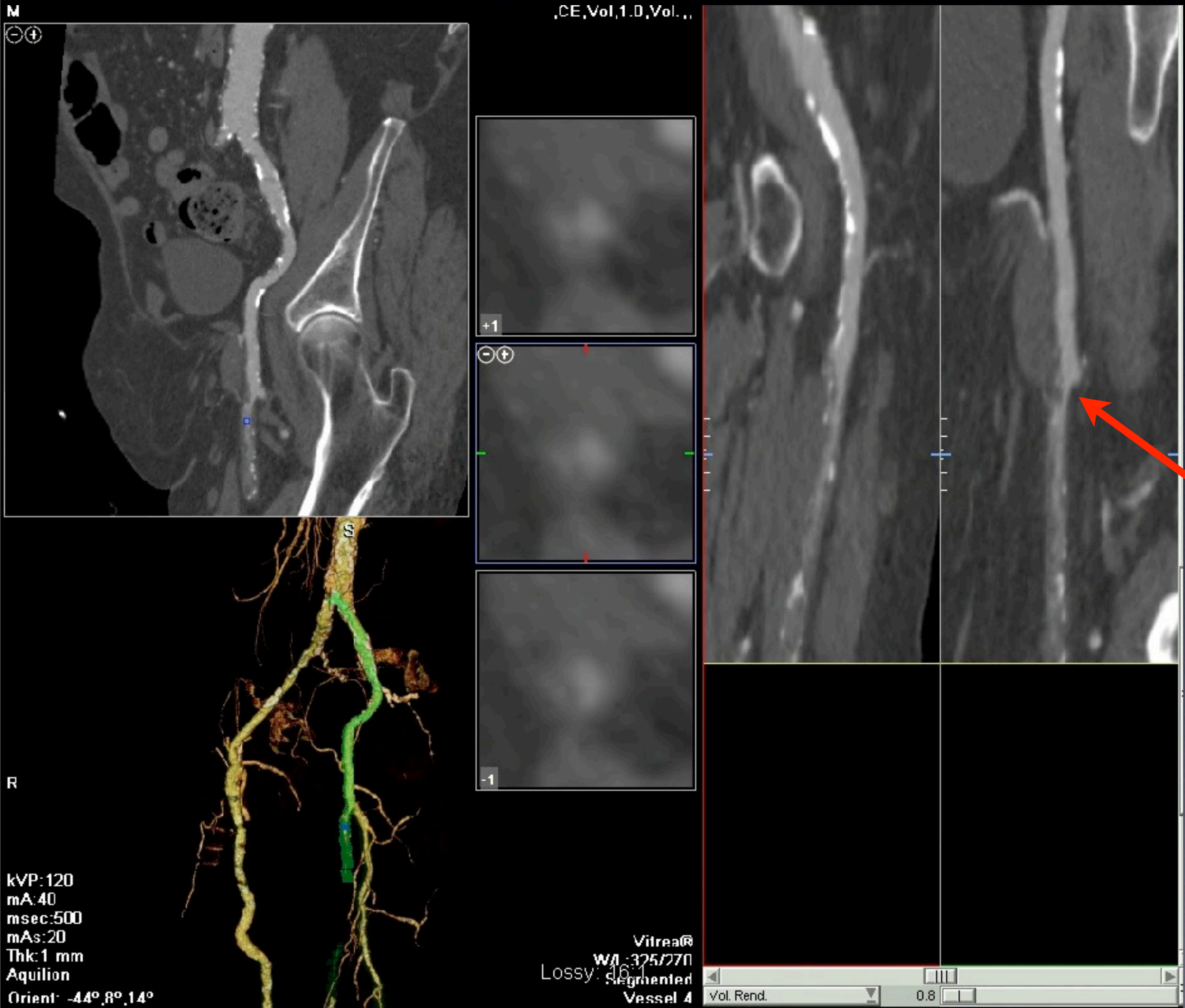
# 87 year-old man

- H/O PVD
- s/p prior right FPBPG
- AODM
- HTN
- Hypercholesterolemia
- GFR = 33
- New onset dry gangrene of left 3-5th digits
- ABI--unavailable

# CTA



# CTA



# CTA



# CTA



# Interventional Plan

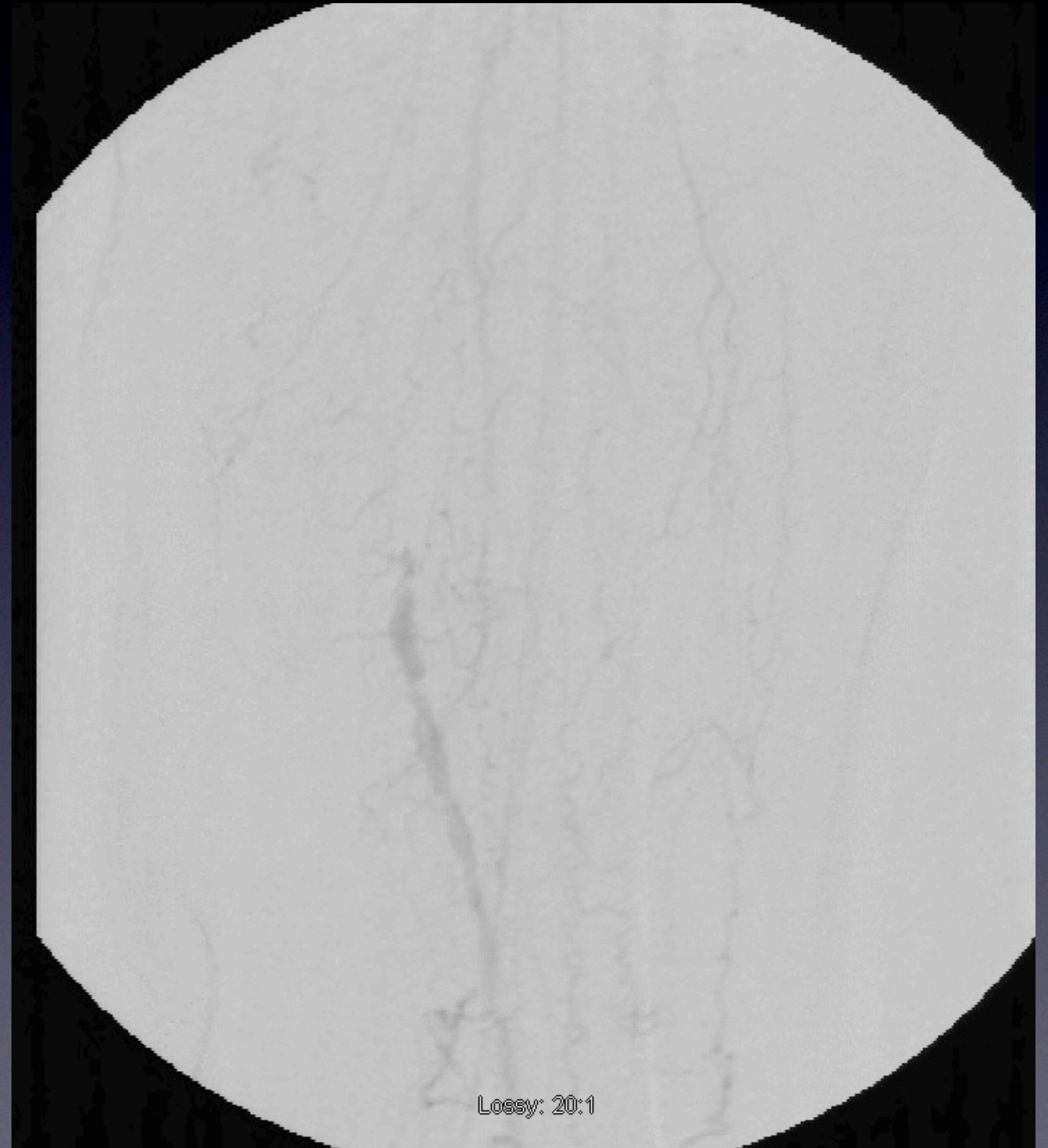
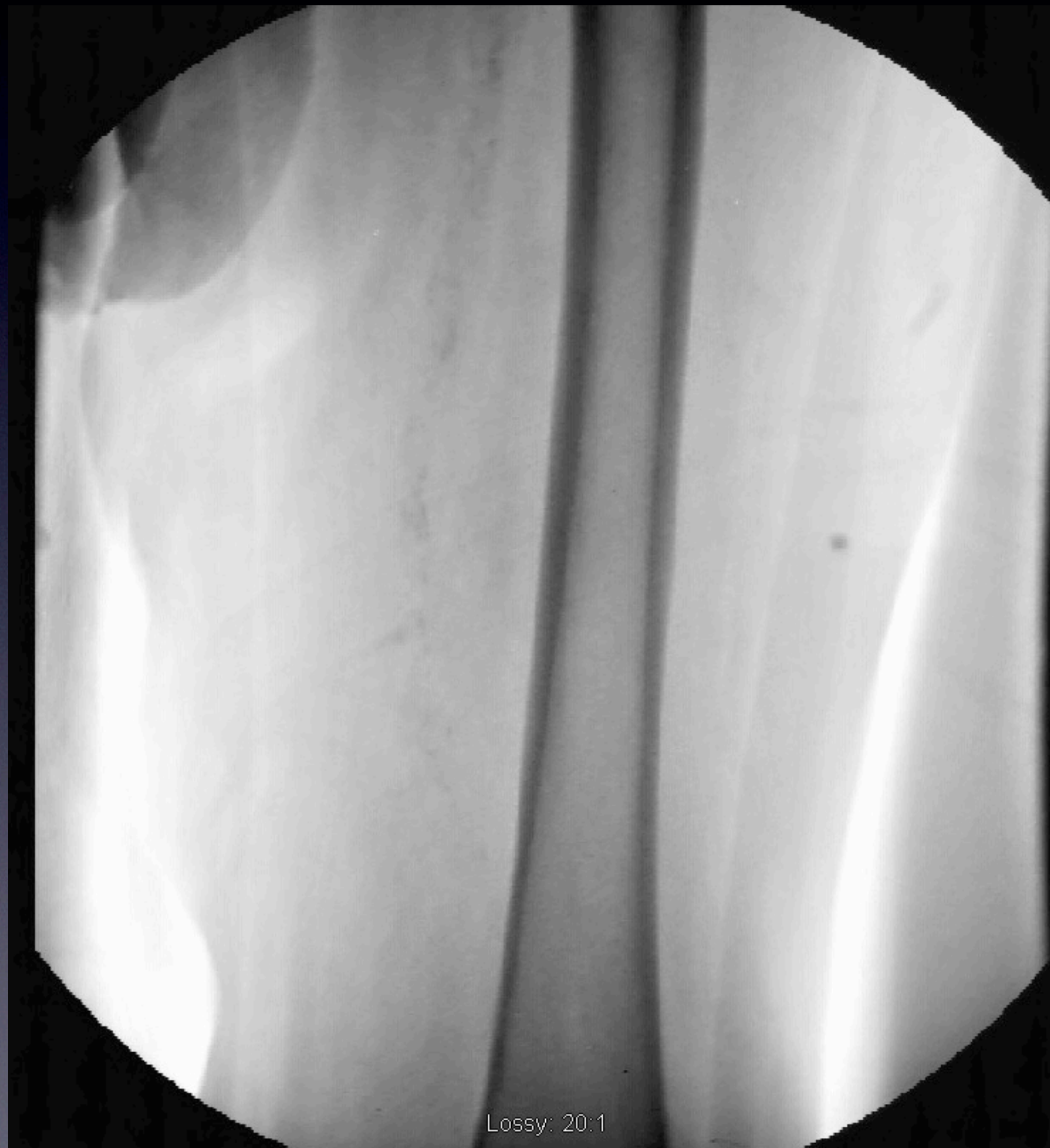
- Right CFA access
- Dx angiogram
- Assess & Treat Left Iliac system as needed
- Recanalize Left SFA
- Assess the left calf run-off



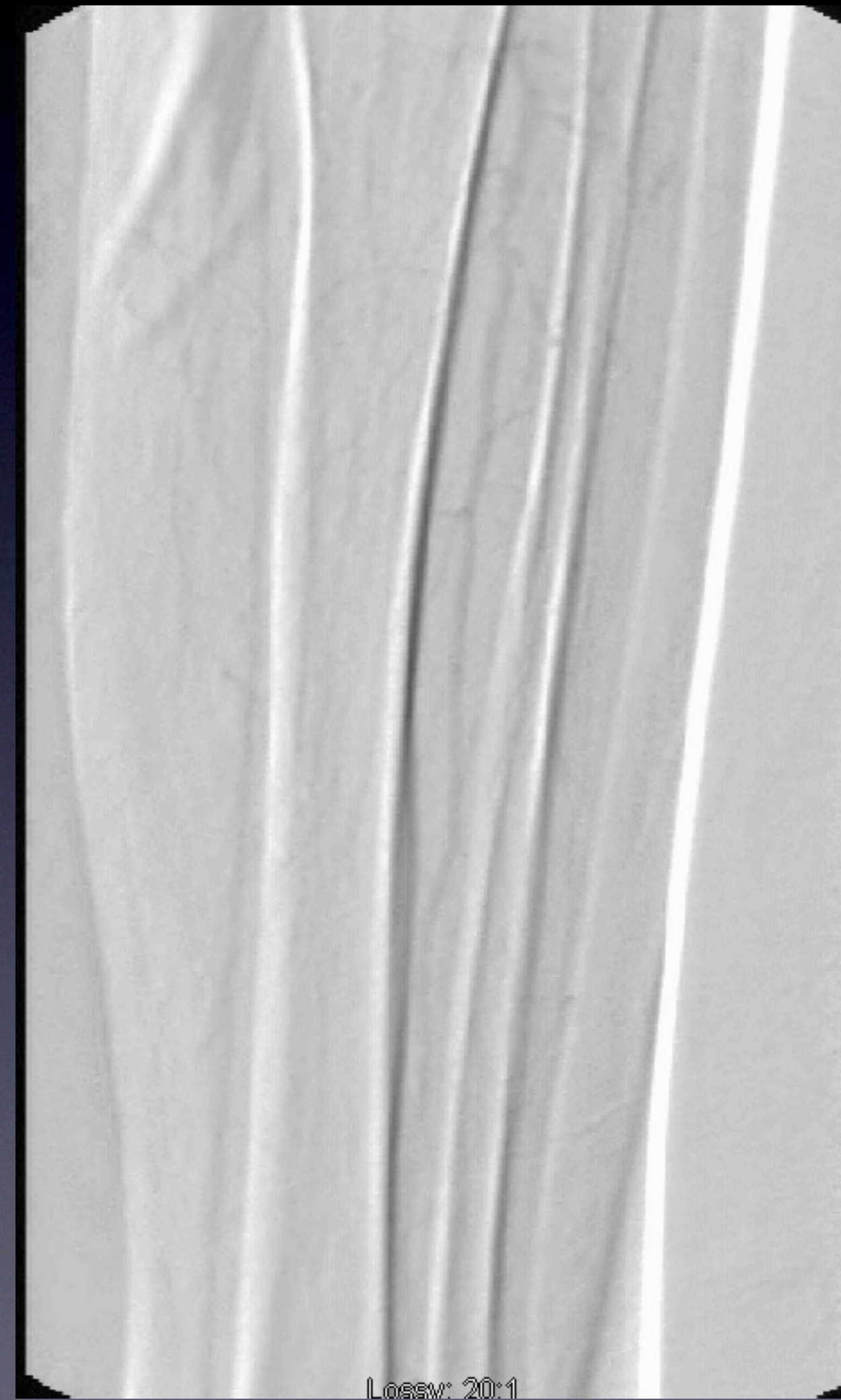
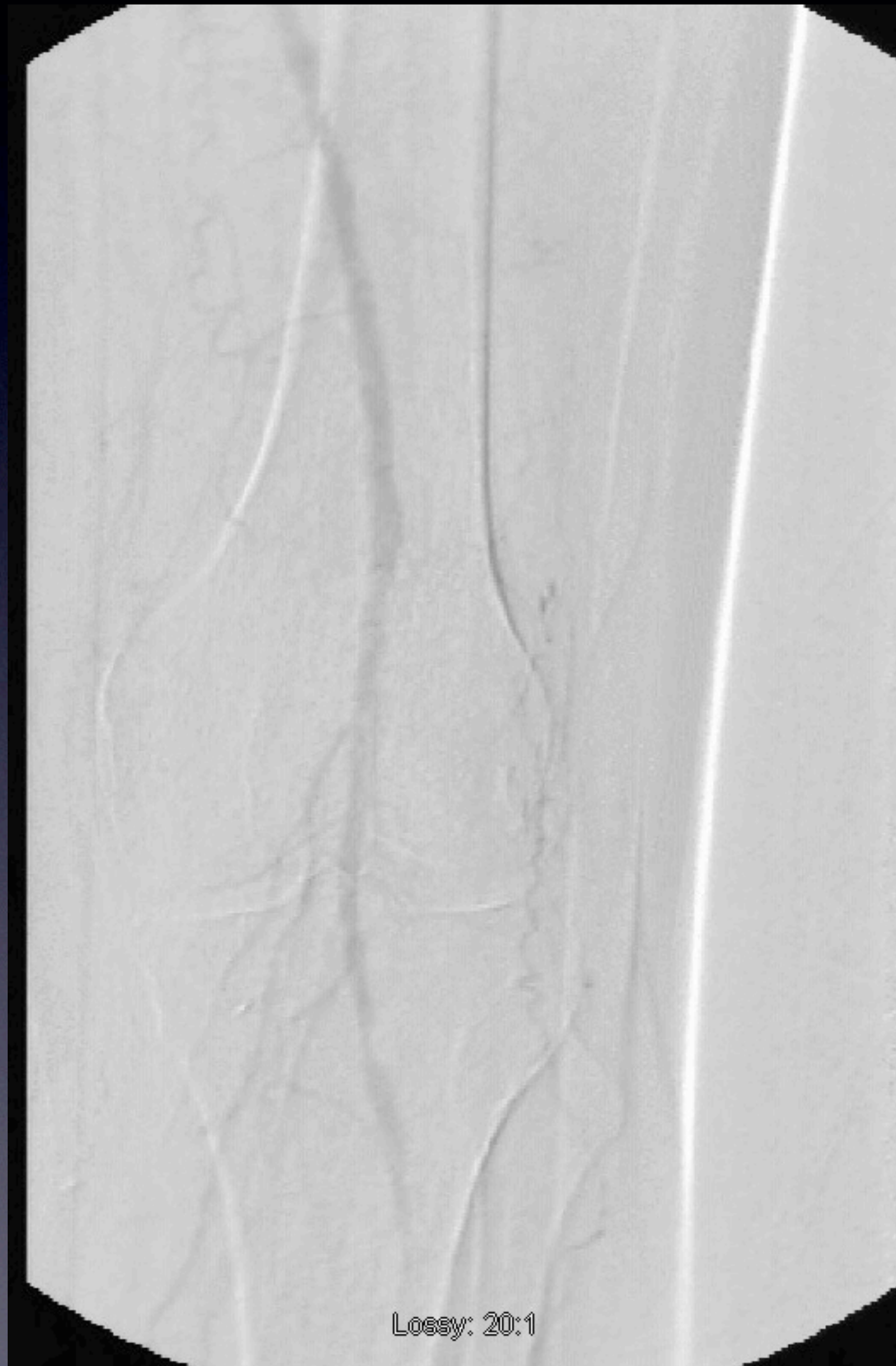
# Diagnostic Angiogram



# Diagnostic Angiogram



# Diagnostic Angiogram



# Recanalization



# Recanalization



# Recanalization



# Angioplasty



# Viabahn Stenting





# Viabahn Expansion



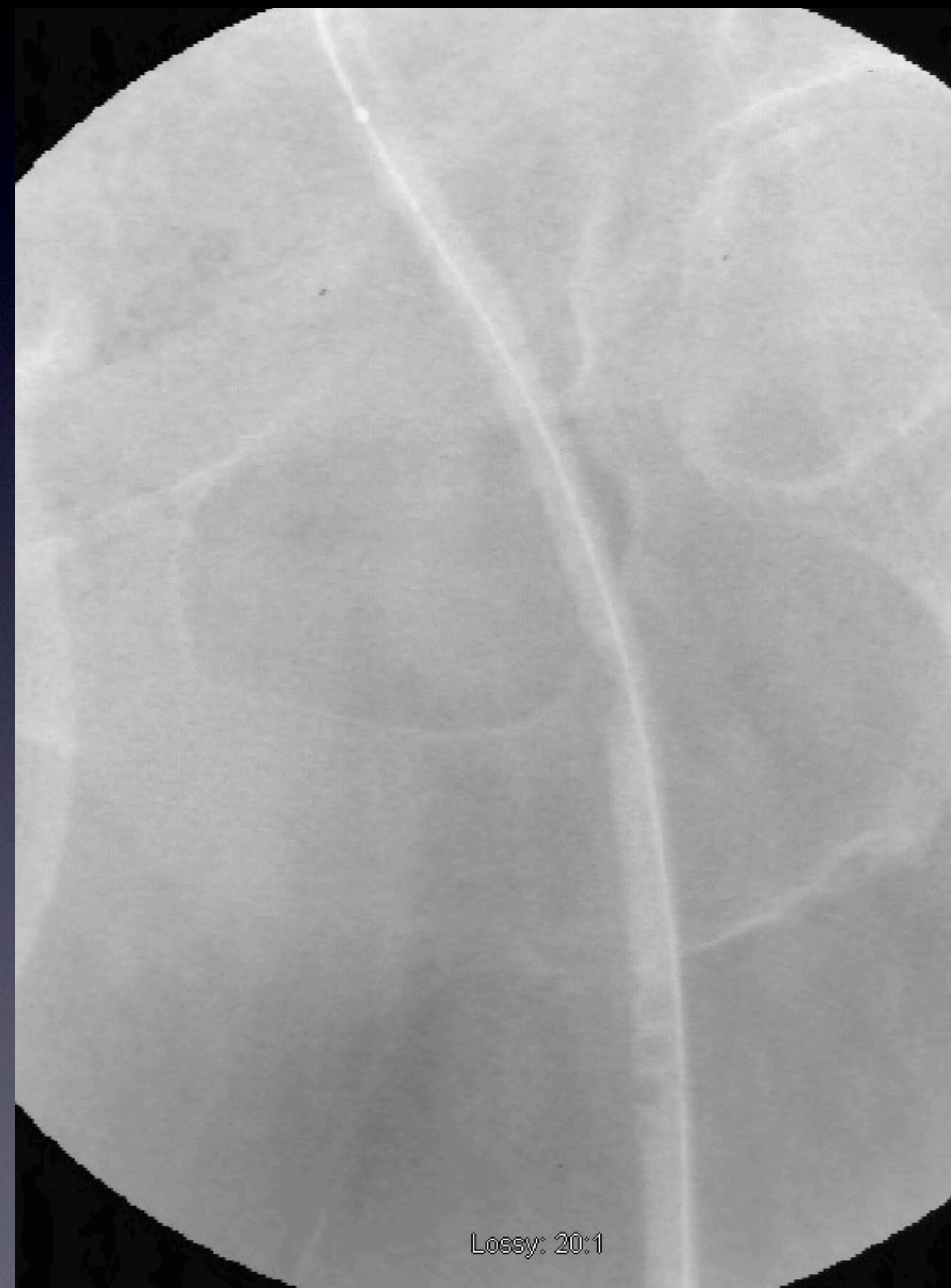
# Angiogram



# Angiogram



# Angiogram



# Angiogram



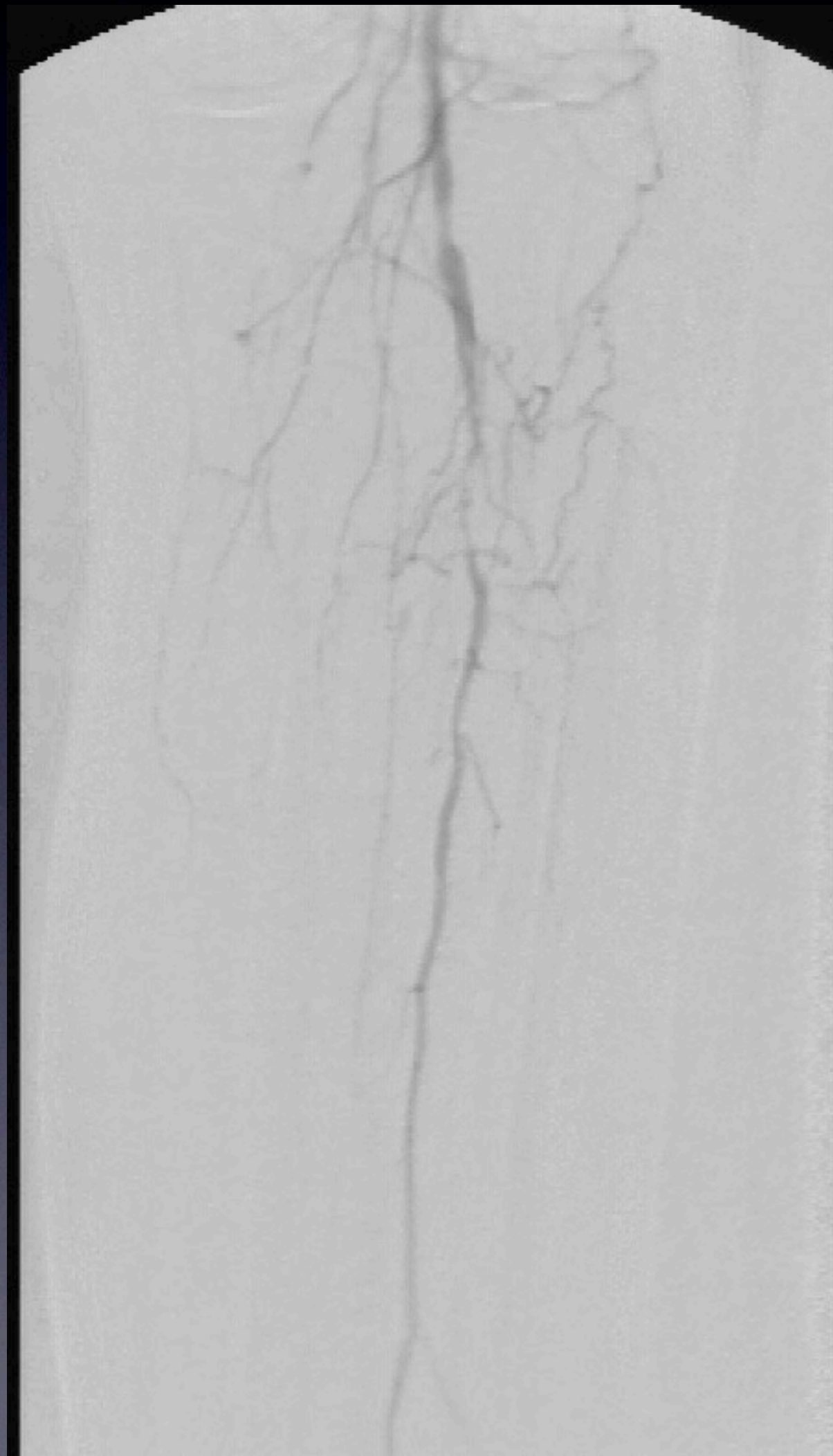
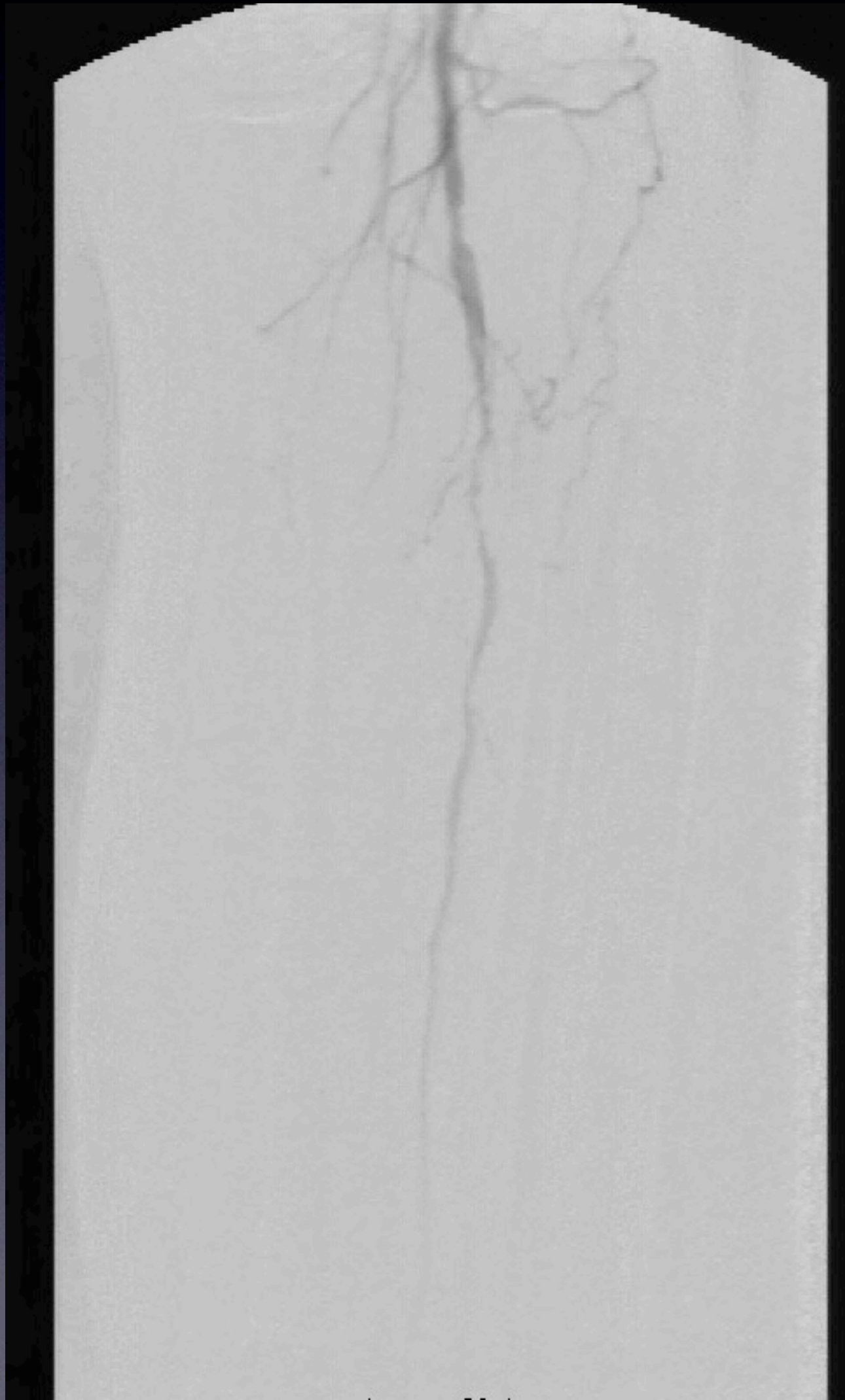
Lossy: 20:1

# Next Step????

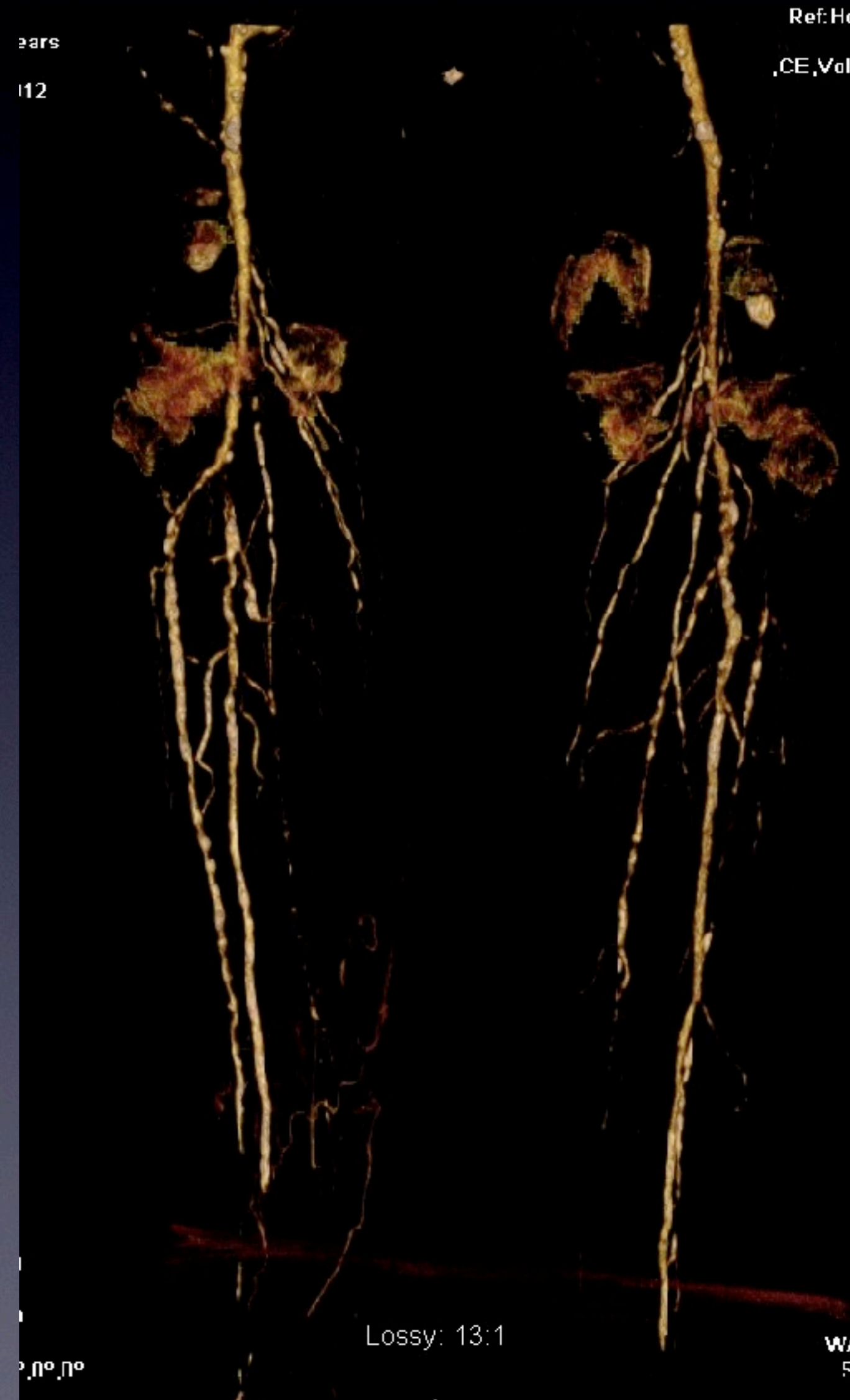
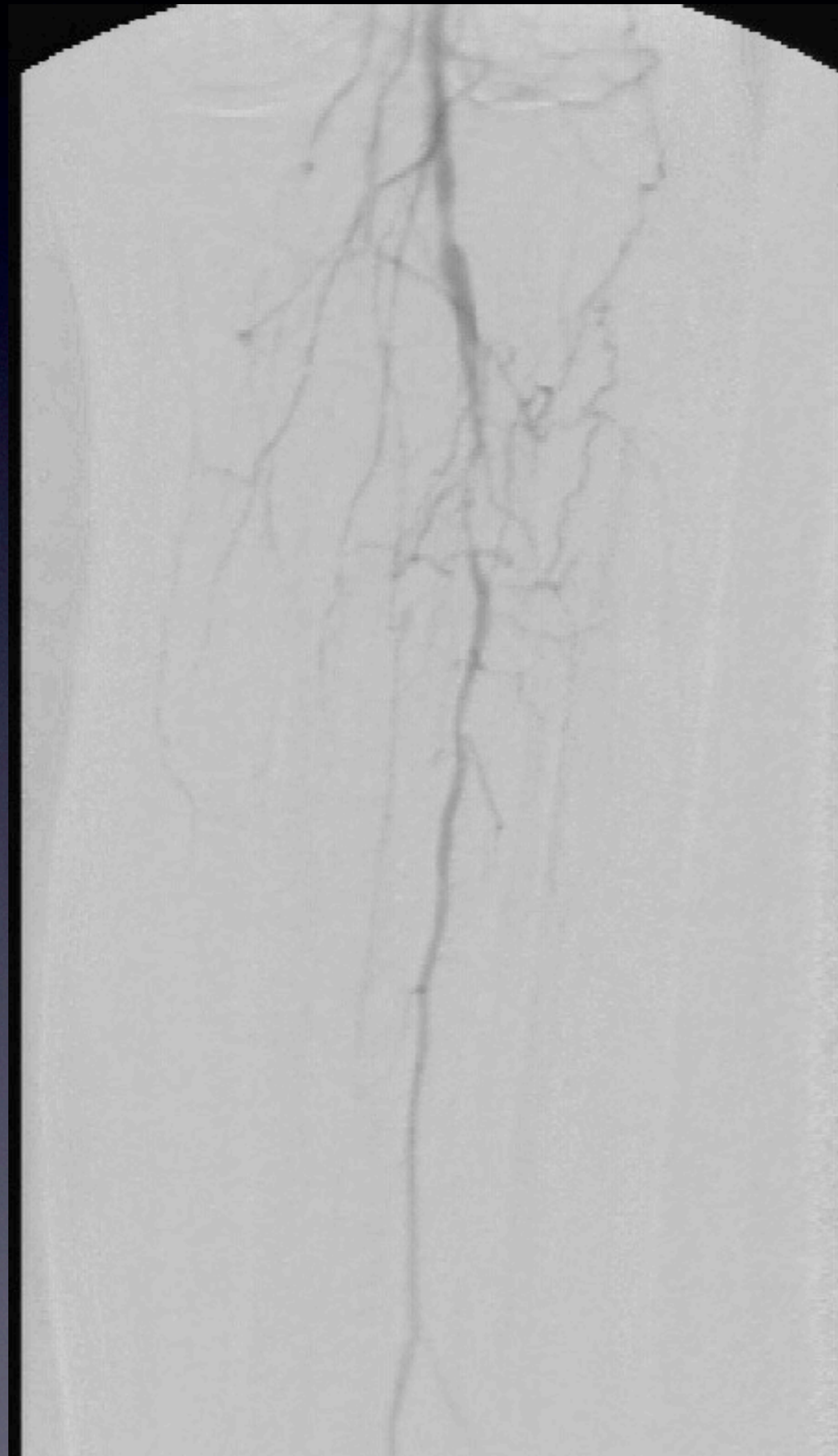
- 300 cc's of contrast
- 3 hours of procedure time

Pause

# Below the Knee...



# Below the Knee...





# Next Steps

- Which side to access?
- Which lesion to treat first?
- PTA vs. Stent
- Paclitaxel
- Exploration of the Left Posterior Tibial?